

# FOR LEASE - WORKSHOPS @ GLENVILLE

46 Maple Avenue, Glenville, NY 12302

Starting at \$1,875/Month - Modified Gross + Utilities



## Offering Summary

\*\*\* Modified Gross + Utilities\*\*\*

Lease Price: \$1,875 per Month  
Building SF: ~ 31,800 SF  
Minimum SF: ~ 1,500 SF  
Maximum SF: ~ 6,000 SF  
Parking: 50+ Vehicles  
Ceiling Height: 14 feet to deck  
Roof: Metal  
Water: Public  
Sewer: Public  
Heating: Natural Gas  
Cooling: Ductless unit

**Cory Tyksinski | Principal Broker**

**o: 518.465.1400 Ext. 217**

**c: 518.857.8396**

**ctyksinski@naplatform.com**

**James "Jay" Verro, CCIM | Associate Broker**

**o: 518.465.1400 Ext. 214**

**c: 518.369.5048**

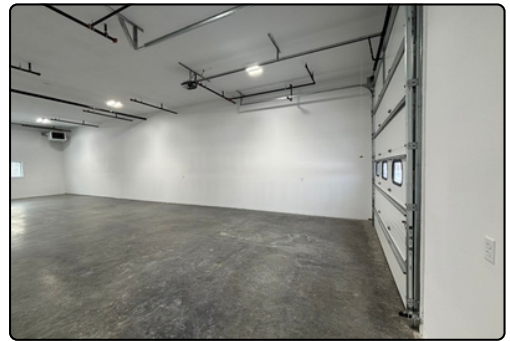
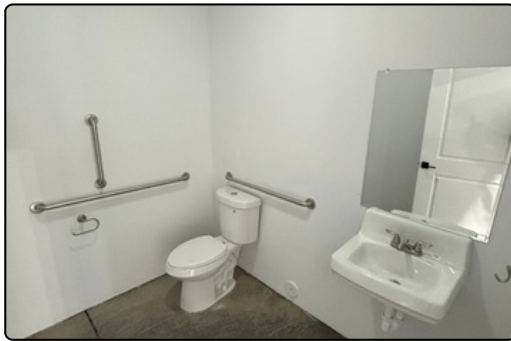
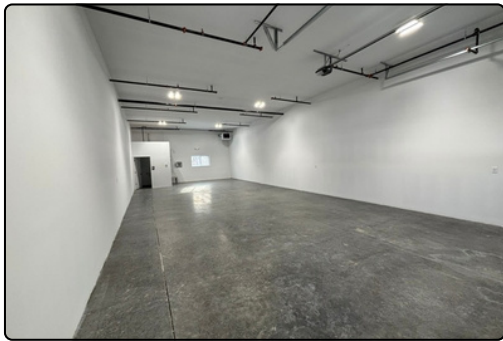
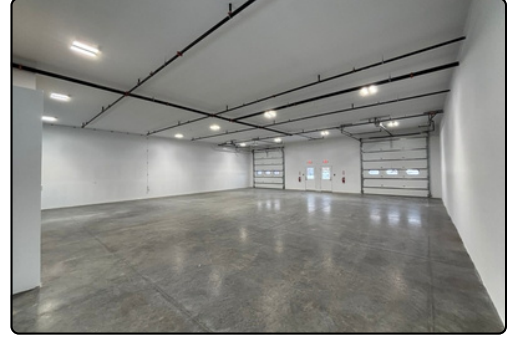
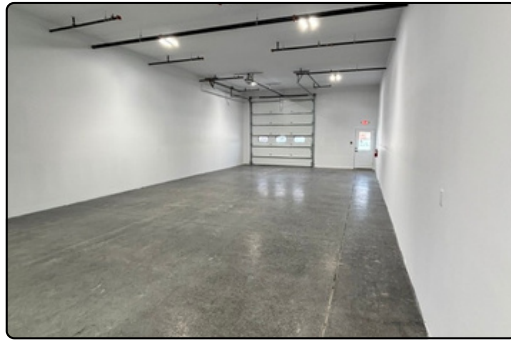
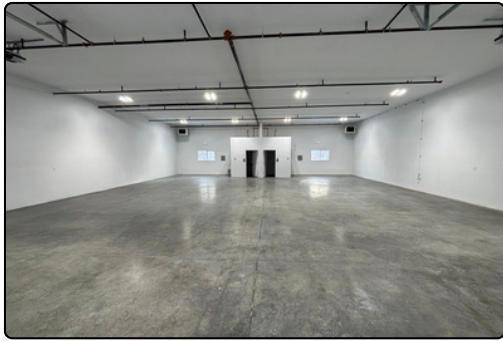
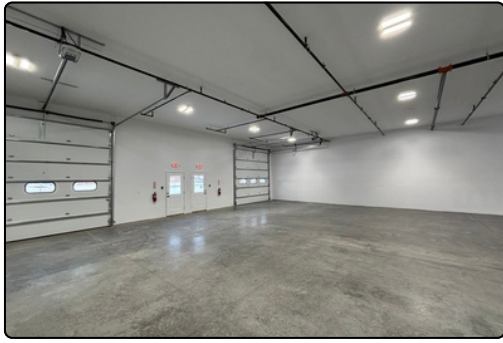
**jverro@ccim.net**

## Property Overview

New Construction Flex Units for Contractors, Retail & Service Users

- Brand-new flex, service contractor spaces
- Sizes from 1,500–6,000 SF (units can be combined)
- Storefront entrances for high visibility
- Oversized 12'x10' drive-in doors
- 12' clear ceiling heights
- Ideal for contractors, service, retail, studio space, or light assembly & storage
- 100 Amp 3 phase power with private restrooms and on-demand separately metered hot water
- Fully sprinklered, dry system
- Secured, well-lit complex with 24/7 access
- High efficiency LED lights
- Optional outdoor storage for vehicles, trailers, or materials - additional cost

# Interior



# Floor Plan

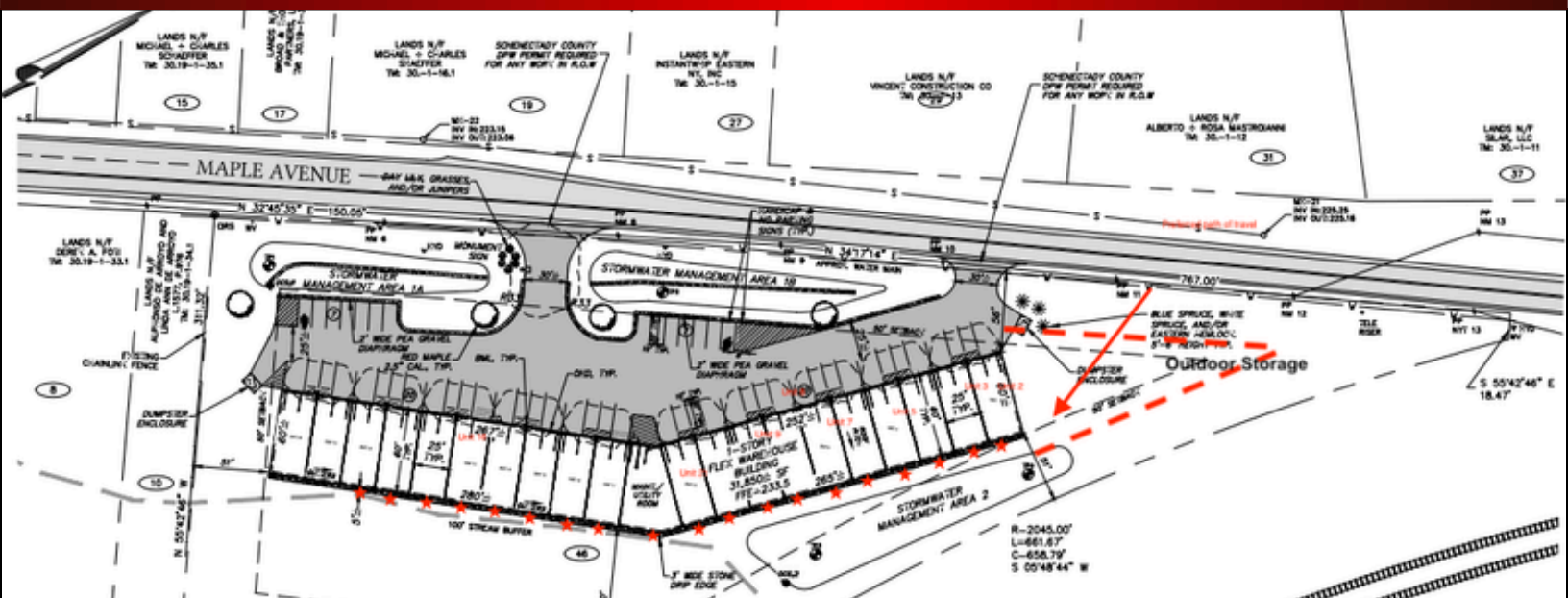


We obtained the information above from sources we believe to be reliable. However, we have not verified its accuracy and make no guarantee, warranty or representation about it. It is submitted subject to the possibility of errors, omissions, change of price, rental or other conditions, prior sale, lease or financing, or withdrawal without notice. We include projections, opinions, assumptions or estimates for example only, and they may not represent current or future performance of the property. You and your tax and legal advisors should conduct your own investigation of the property and transaction.

# Exterior



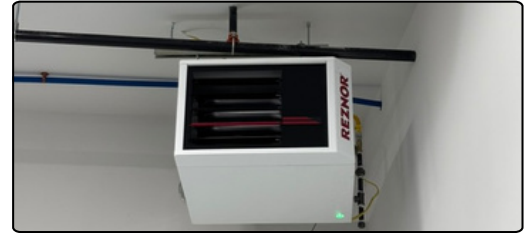
# Site Plan



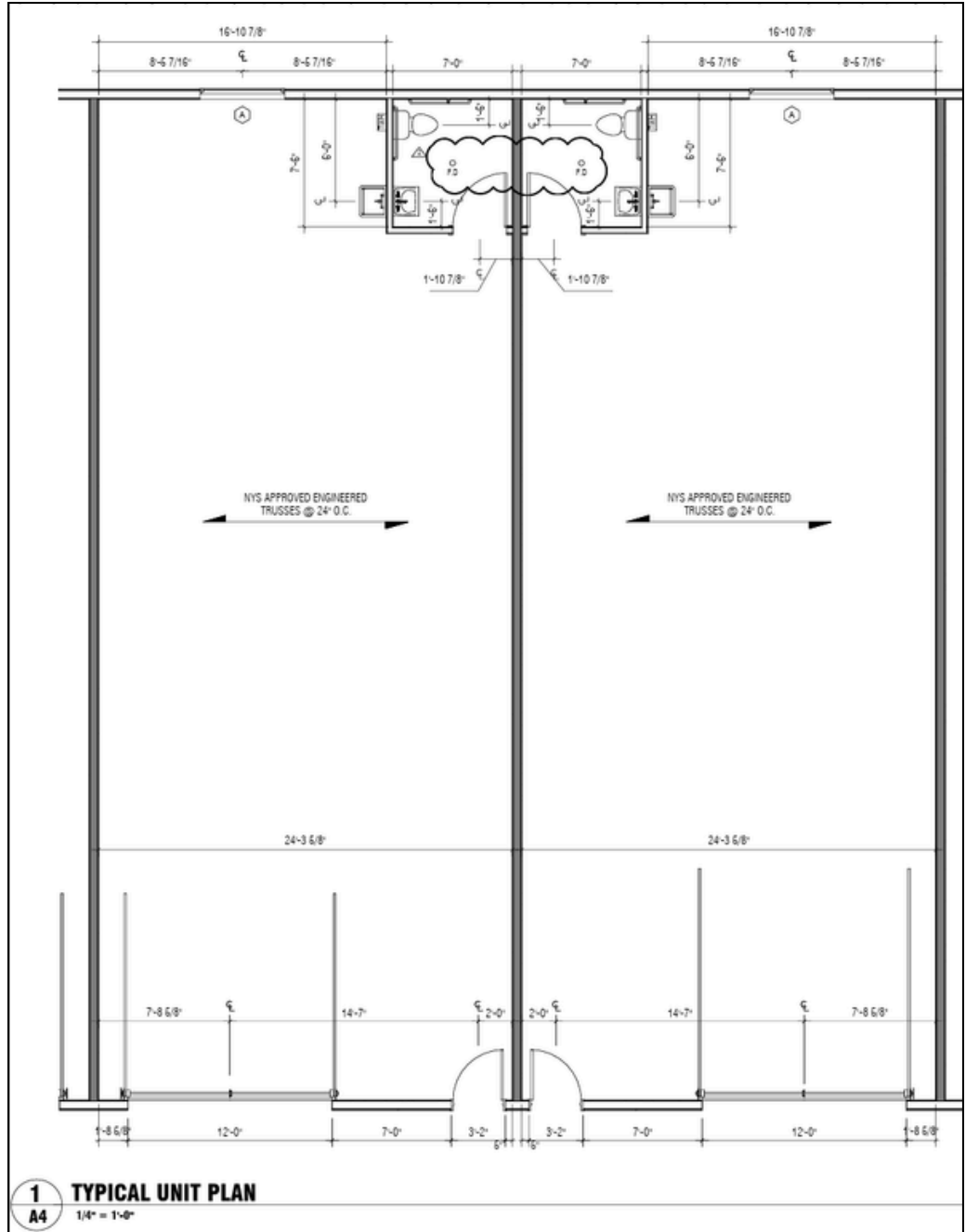
We obtained the information above from sources we believe to be reliable. However, we have not verified its accuracy and make no guarantee, warranty or representation about it. It is submitted subject to the possibility of errors, omissions, change of price, rental or other conditions, prior sale, lease or financing, or withdrawal without notice. We include projections, opinions, assumptions or estimates for example only, and they may not represent current or future performance of the property. You and your tax and legal advisors should conduct your own investigation of the property and transaction.



# Mechanical Amenities



## Typical Unit Plan



We obtained the information above from sources we believe to be reliable. However, we have not verified its accuracy and make no guarantee, warranty or representation about it. It is submitted subject to the possibility of errors, omissions, change of price, rental or other conditions, prior sale, lease or financing, or withdrawal without notice. We include projections, opinions, assumptions or estimates for example only, and they may not represent current or future performance of the property. You and your tax and legal advisors should conduct your own investigation of the property and transaction.