

FOR LEASE: 1ST FLOOR OFFICE SPACE - SUITE 3

9 Corporate Drive, Halfmoon, NY 12065



Property Overview

Secure the final remaining office suite in one of Clifton Park's most sought-after corporate locations. Suite 3 offers 1,282 SF of Class A office space and is the only suite currently available in the building - and is For Lease at \$2,245/month - Full Service Gross. This professionally maintained suite features abundant natural light, a functional open layout, and meticulously kept common areas.

This property offers ample parking directly outside the entrance, along with beautifully maintained landscaping that enhances the professional environment. With the landlord also occupying space within the building, tenants benefit from attentive on-site oversight and a commitment to high-quality property management. Ideal for professional services, corporate users, and businesses seeking a polished presence in a convenient Clifton Park location.



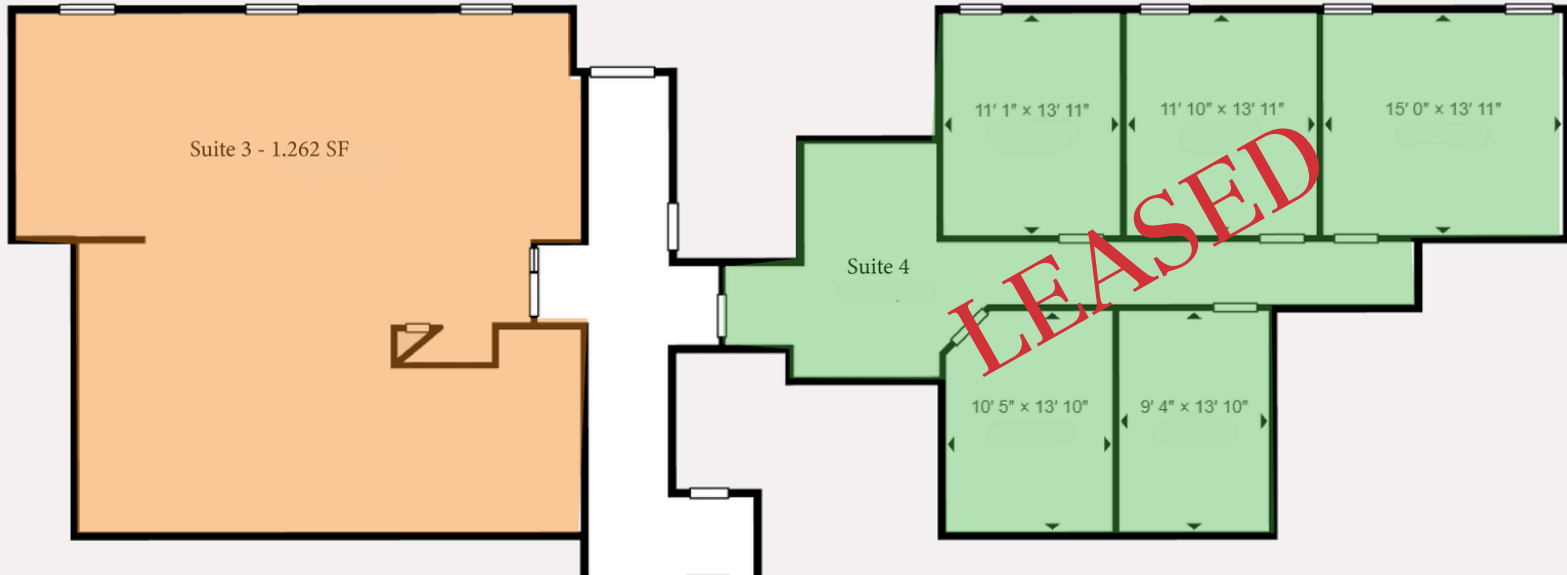
James "Jay" Verro, CCIM | Associate Broker
O: 518 465 1400 x 214 | C: 518.369.5048
jverro@ccim.com



Cory Tyskinski | Principal Broker
518 465 1400 x 217 | C: 518.857.8396
ctyksinski@naiplatform.com

FOR LEASE: 1ST FLOOR OFFICE SPACE - SUITE 3

9 Corporate Drive, Halfmoon, NY 12065



We obtained the information above from sources we believe to be reliable. However, we have not verified its accuracy and make no guarantee, warranty or representation about it. It is submitted subject to the possibility of errors, omissions, change of price, rental or other conditions, prior sale, lease or financing, or withdrawal without notice. We include projections, opinions, assumptions or estimates for example only, and they may not represent current or future performance of the property. You and your tax and legal advisors should conduct your own investigation of the property and transaction.