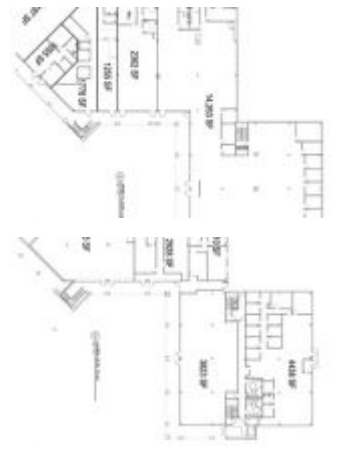


2341 NOTT ST E, NISKAYUNA, NY 12309, USA

<http://naiplatform.com>

2341 Nott St E,
Niskayuna, NY 12309,
USA



St. James Square Phase II space for lease. Ready for occupancy. See LBO for changes in co-op compensation. Space available: $\pm 1,055$ SF up to $\pm 17,680$ SF available for lease on upper level.

- Commercial
- For Lease
- Extended



Image not found or type unknown



NAIPlatform

PROPERTY OVERVIEW

MLS #: 29000288

Type: Commercial

Status: Extended

Zoning: Commercial

Building Total SqFt: 45700

of Parking Spaces: 165

Parking: Private

Sign: Yes

PROPERTY DETAILS

Acres: 4.27

Air Conditioning: central

Heat System: GHA

Water: City

Elevator #: 1

BUILDING INFORMATION

Total Available SqFt: 17680

Retail Available SqFt: 17680

Floors: 2

Construction: Steel/brck

Condition: Excellent

Roof: Mem

Age: 7

Septic: No

Image not found or type unknown



Sprinklers Desc: wet

LISTING COURTESY OF:

Office Name: CBRE Albany

Office Phone Number: 518-452-2700

PRICING INFO

Price : \$ 1.00

Offered Lease/SqFt : \$ 13.95

Offered Lease Terms: MG

Tenant Pays: all nets

Image not found or type unknown

